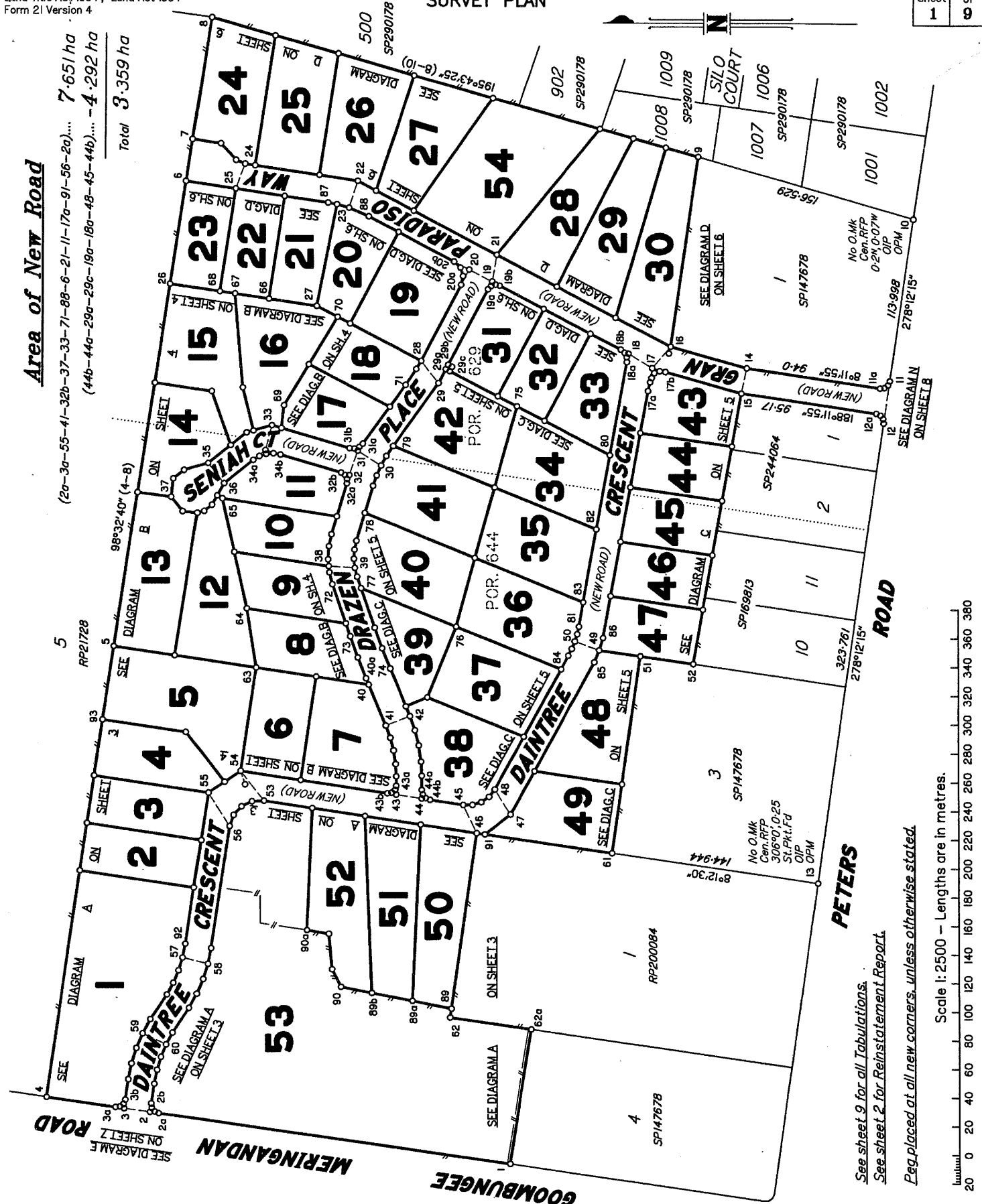


**Area of New Road**

(20-30a-55-41-32b-37-33-71-88-6-21-11-170-91-56-20),... 7.651 ha  
(44b-44a-290-296-180-180-48-45-44b),... - 4.292 ha  
Total 3.359 ha



PARKINSON SURVEYS PTY LTD (ACN 604 671 123), hereby certify that the land comprised in this plan was surveyed by the corporation, by Jason John PUGNO, Registered Surveyor, for whose work the corporation accepts responsibility, under the supervision of Stephen Charles McKENZIE, Cadastral Surveyor and that the plan is accurate, that the said survey was performed in accordance with the Survey and Mapping Infrastructure Act 2003 and Surveyors Act 2003 and associated Regulations and Standards and that the said survey was completed on 26/02/2022.

*J.P.*  
Jason John Pugno  
Director

*Stephen Charles McKENZIE*  
Stephen Charles McKENZIE  
Director

Date: 4/04/2022

<p>Scale: 1:2500</p> <p>Format: STANDARD</p>	
<p>Plan of Lots 1 - 54</p> <p>Cancelling Lot 5 on SPI47678.</p>	
<p>LOCAL GOVERNMENT: TOOWOOMBA REGIONAL COUNCIL</p> <p>LOCALITY: MERINGANDAN WEST</p>	<p>Meridian: MGA 2020 (Zone 56) vide CORS</p> <p>Survey Records: No</p>
<p>SP330180</p>	

See sheet 9 for all Tabulations.  
See sheet 2 for Reinstatement Report.  
Peg placed at all new corners, unless otherwise stated.

Scale 1:2500 - Lengths are in metres.

14628.DTD

(Dealing No.)

4. Lodged by

(Include address, phone number, email, reference, and Lodger Code)

Existing		Created		
Title Reference	Description	New Lots	Road	Secondary Interests
50387170	Lot 5 on SPI47678	1-54	New Rd	-

**MORTGAGE ALLOCATIONS**

Mortgage	Lots Fully Encumbered	Lots Partially Encumbered
720807280	1-54	
720890439	1-54	

**EXISTING ADMINISTRATIVE ADVICE ALLOCATIONS**

Administrative Advice	Lots to be Encumbered
711606860	1-54
713915883	1-54

**REINSTATEMENT REPORT:**

**Adoptions:**  
Stns 1,4,8,10,6,9,11,12,13,15,16,46,51,52,62 & 62a have been fixed by original mark, occupation or reference marks at their respective corners.

**Method:**

Stn 9 is by proportion of small shortage between Stns 8 & 10  
Stn 61 is by proportion of small excess between Stns 13 & 46.

OIP at Stn 15 was found leaning badly. The pin was dug up and straightened carefully to upright position. The original reference from SPI47678 was then used and it provided good agreement to the west and south. The reference for the same pin shown on SP244064 was disregarded as it did not provide any correlation to the previous dimensions.

**Comparisons:**

LINE	MERIDIAN	DIST	PLAN
1-4	+7°55'22"	-0-009	SPI47678
4-8	+7°55'08"	+0-019	SPI47678
8-9	+7°55'07"	-0-003	SPI47678
9-10	+7°55'07"	-0-001	SPI47678
10-11	+7°55'15"	-0-002	SPI47678
11-12	+7°55'15"	+/-	SPI47678
12-13	+7°55'15"	+0-019	SPI47678
12-12a	+7°55'15"	+/-	SPI47678
11-11a	+7°55'15"	+/-	SPI47678
11a-14	+7°54'55"	+/-	SPI47678
12a-15	+7°54'55"	+/-	SPI47678
14-16	+7°54'55"	+0-011	SPI47678
16-9	+7°55'40"	+0-009	SPI47678
15-52	+7°55'15"	+0-008	SPI47678
52-51	+7°55'10"	+/-	SPI47678
51-61	+7°55'40"	+/-	SPI47678
61-13	+7°55'24"	+0-014	SPI47678
61-46	+7°55'24"	+0-010	SPI47678
46-62	+7°54'35"	+0-018	SPI47678
62-62a	+7°55'15"	-0-002	SPI47678
62a-1	+7°54'30"	+/-	SPI47678

Notification issued to the owner(s) of Lot 4 on SPI47678 on 31/03/2022, in accordance with s.18 of the Survey and Mapping Infrastructure Regulation 2014.

**6. Building Format Plans only.**

I certify that:  
\* As far as it is practical to determine, no part of the building shown on this plan encroaches onto adjoining lots or road.  
\* Part of the building shown on this plan encroaches onto adjoining \* lots and road

Cadastral Surveyor/Director\* Date  
\* delete words not required

**7. Lodgement Fees :**

Survey Deposit	\$ .....
Lodgement	\$ .....
.....New Titles	\$ .....
Photocopy	\$ .....
Postage	\$ .....
TOTAL	\$ .....

8. Insert Plan Number **SP330180**

14,15,34,41,42,45  
16-33,43,44 & 54  
1-13,35-40,46-53

Por 629 & Por 644  
Por 629  
Por 644

Lots

Orig

2. Orig Grant Allocation :

3. References :

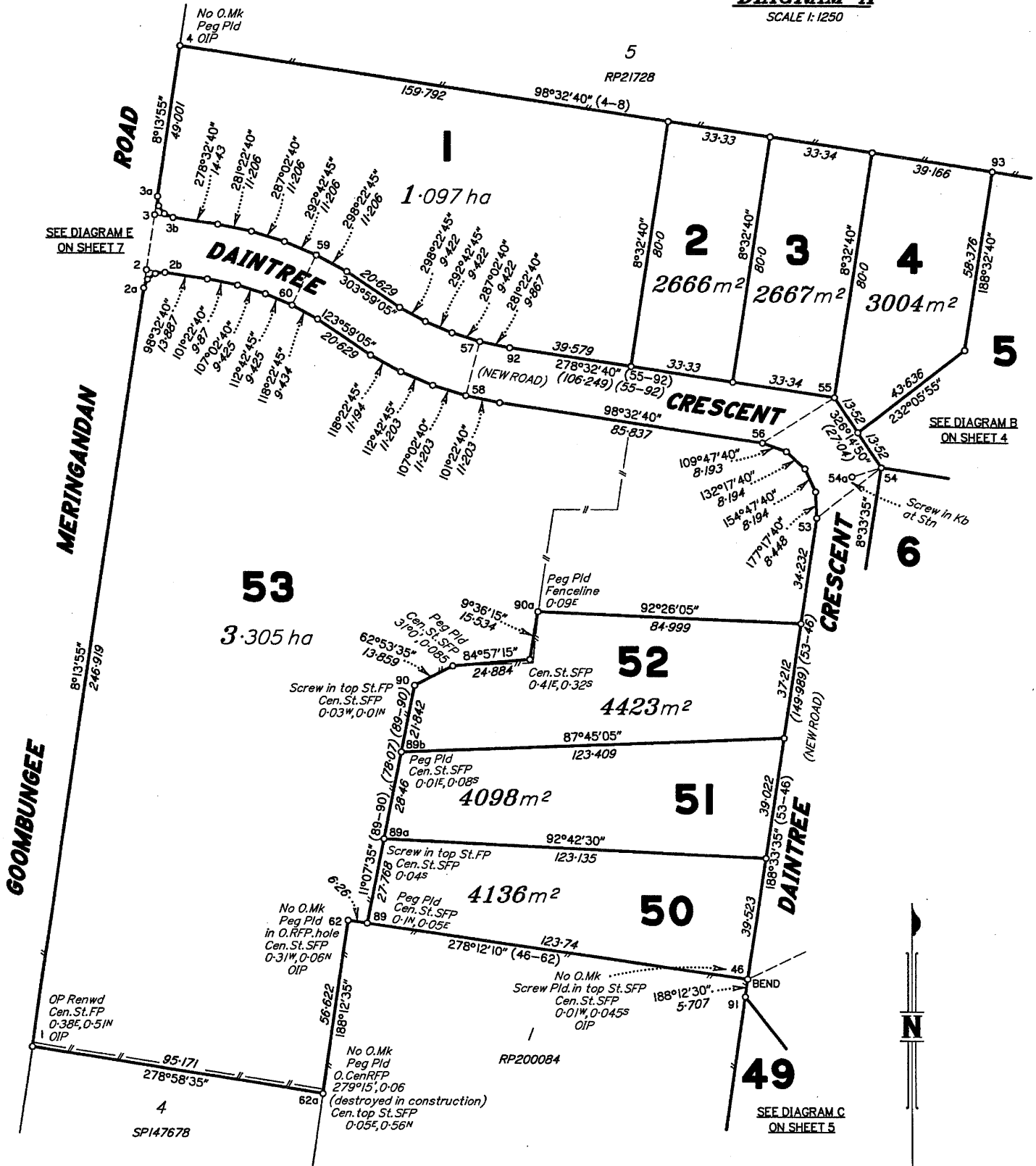
Dept File :  
Local Govt : RAL/2010/3561  
Surveyor : 14628

5. Passed & Endorsed :

By: PARKINSON SURVEYS PTY LTD  
Date: 4/04/2022  
Signed: *Stephen McKeon*  
Designation :Cadastral Surveyor/Director

**DIAGRAM A**

SCALE 1:1250

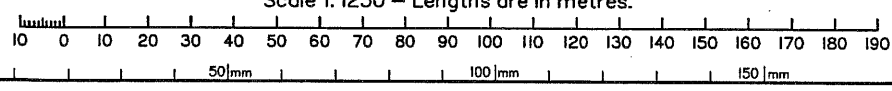


SEE DIAGRAM E ON SHEET 7

SEE DIAGRAM B ON SHEET 4

SEE DIAGRAM C ON SHEET 5

Scale 1:1250 - Lengths are in metres.



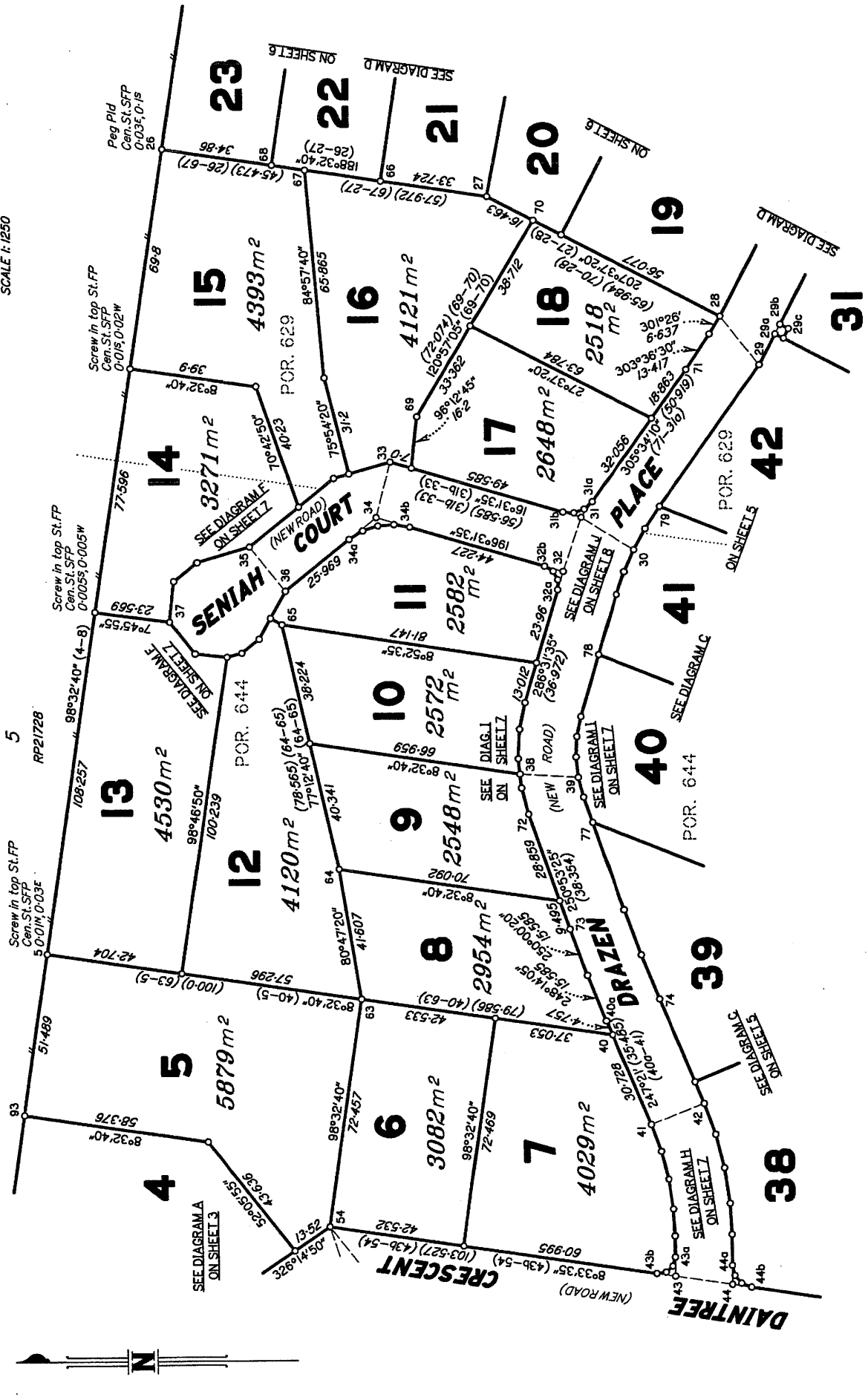
State copyright reserved.

Insert Plan Number **SP330180**

14629 DTD

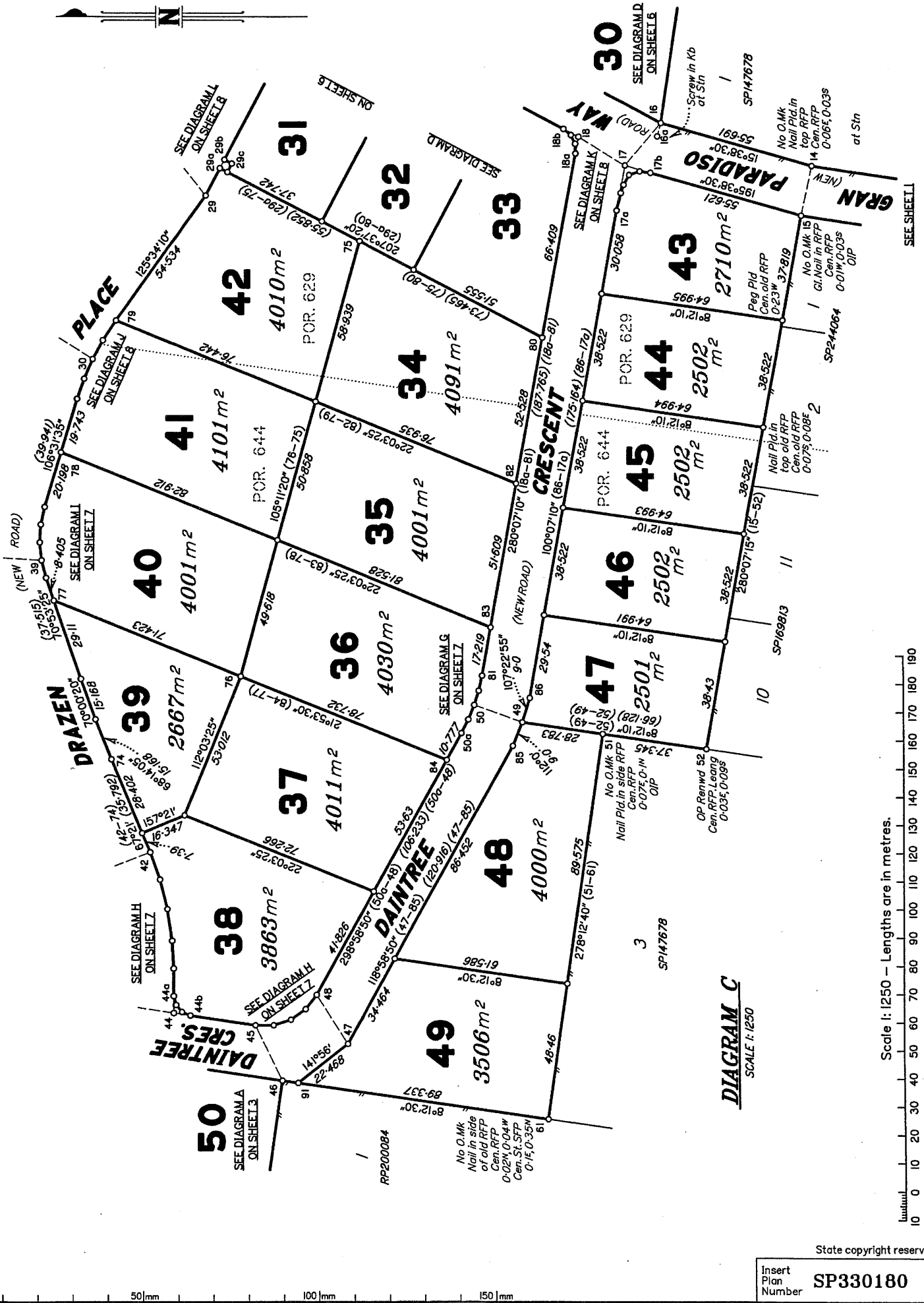
**DIAGRAM B**

SCALE 1:1250



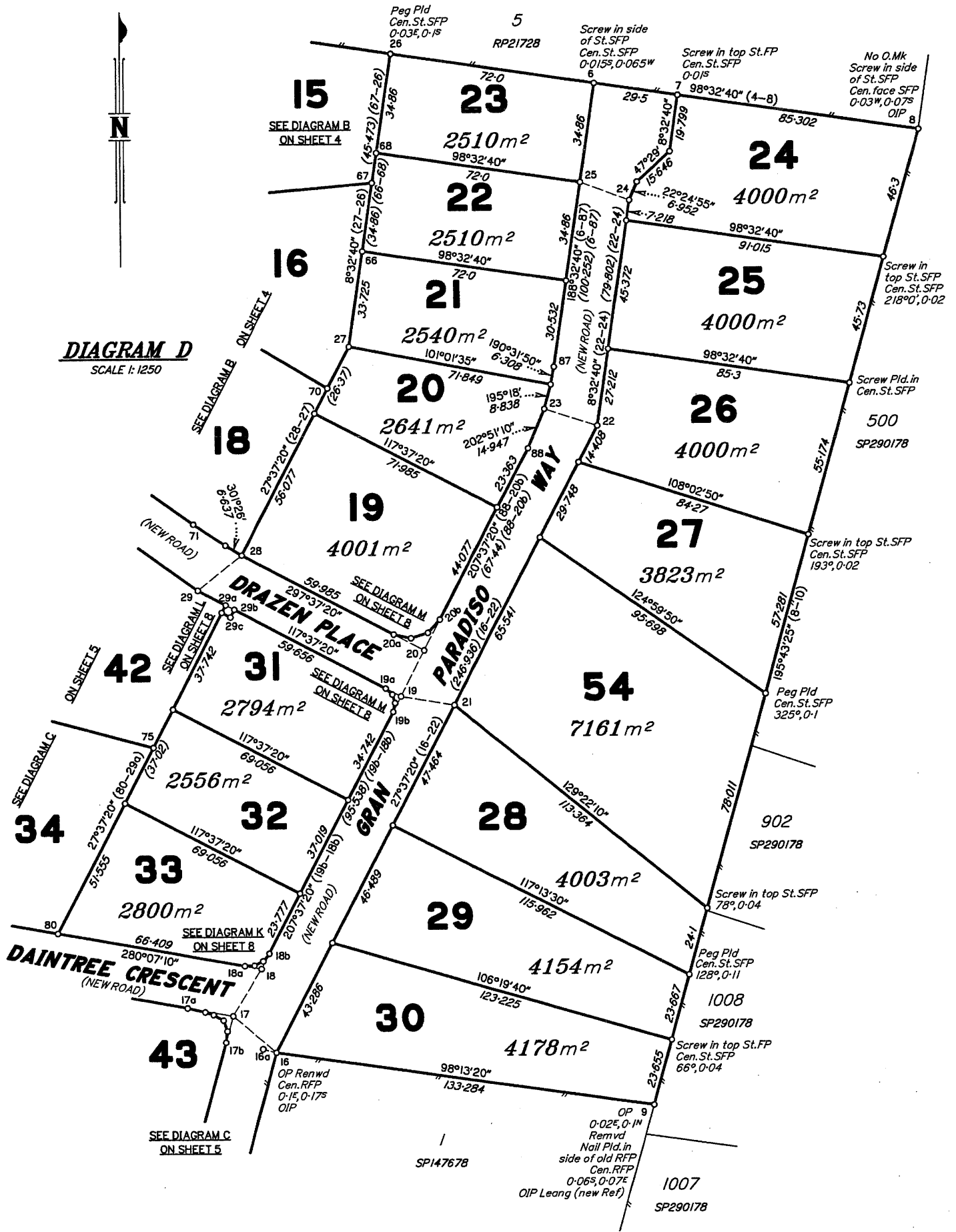
Scale 1:1250 - Lengths are in metres.

14628.D170

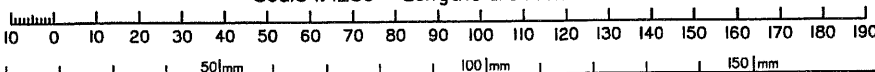




**DIAGRAM D**  
SCALE 1:1250



Scale 1:1250 - Lengths are in metres.

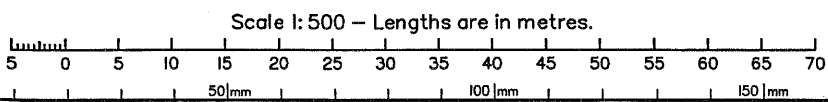
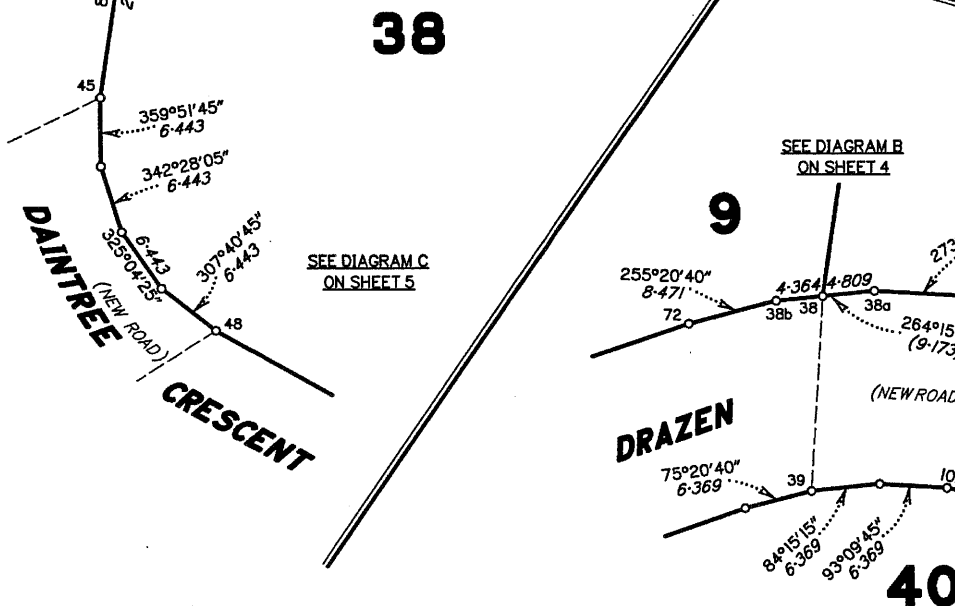
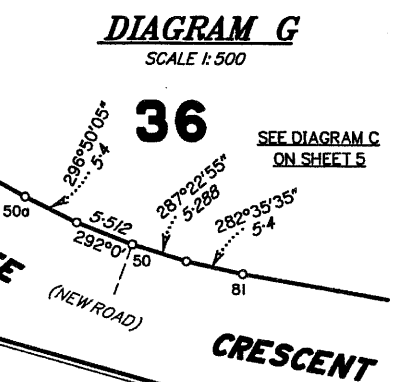
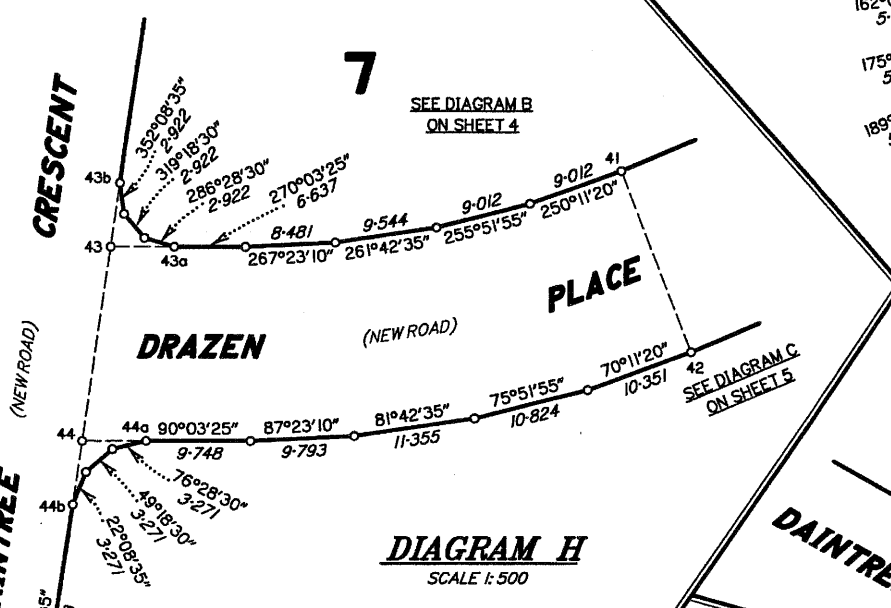
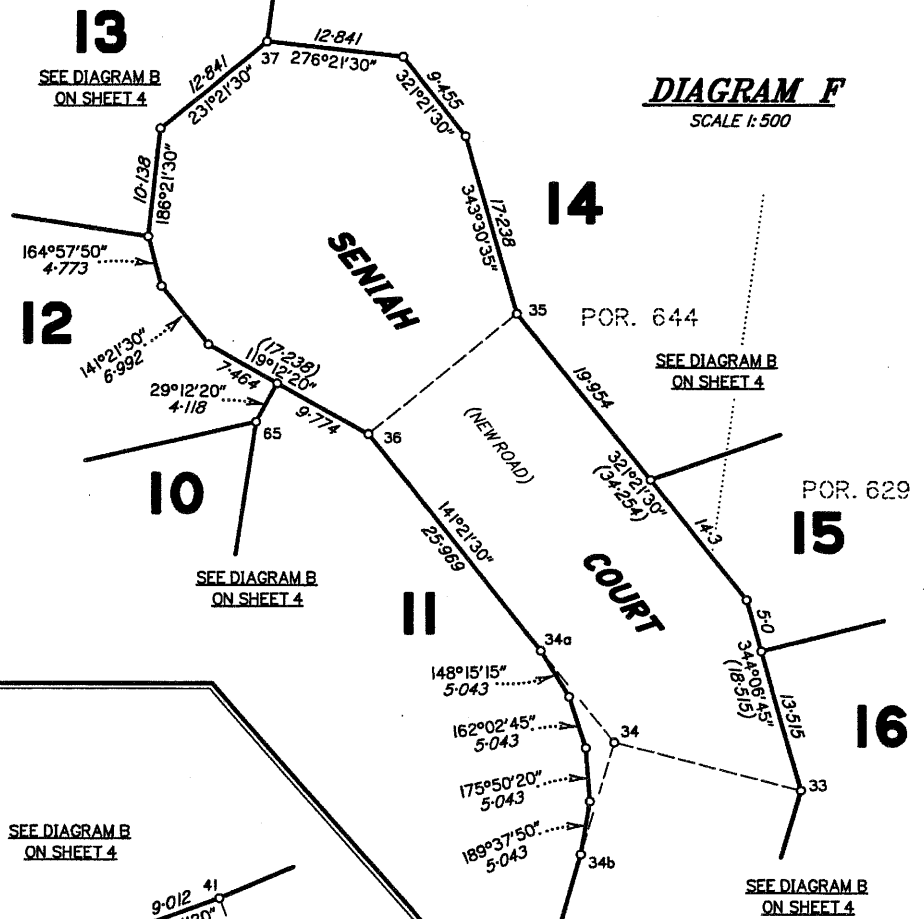
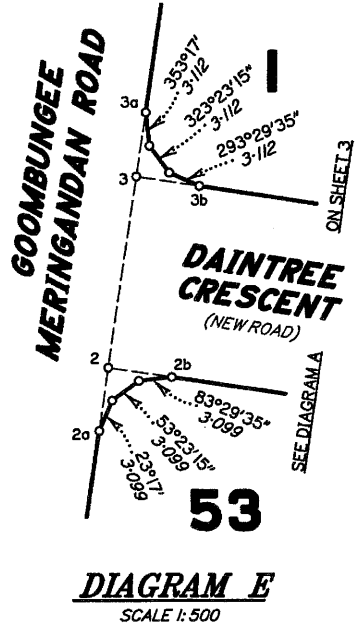


State copyright reserved.

Insert Plan Number **SP330180**

14628 DTD

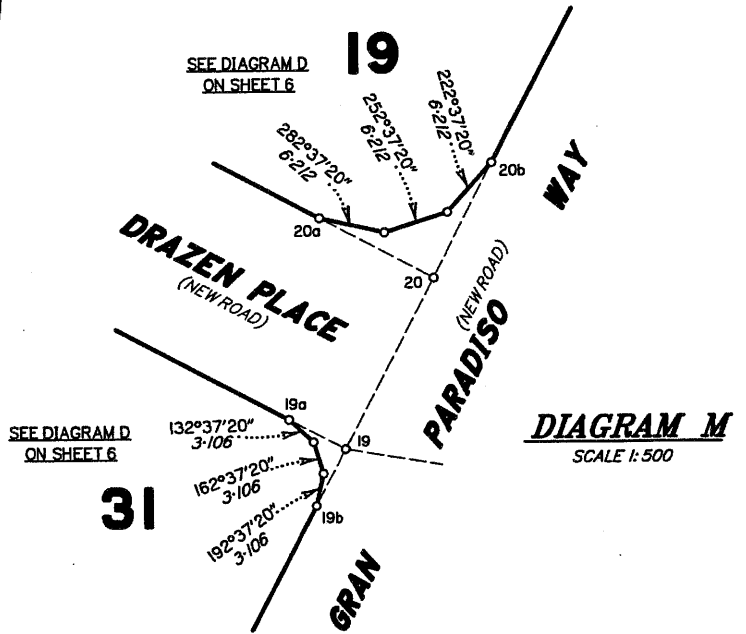
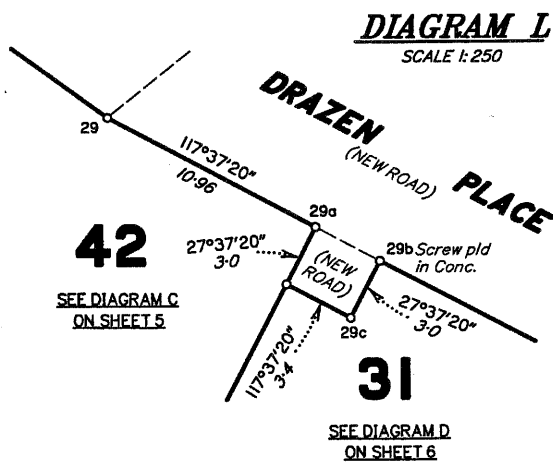
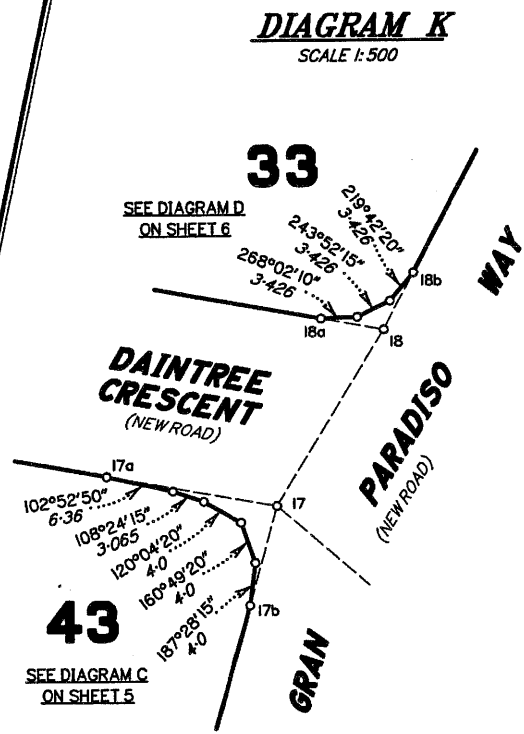
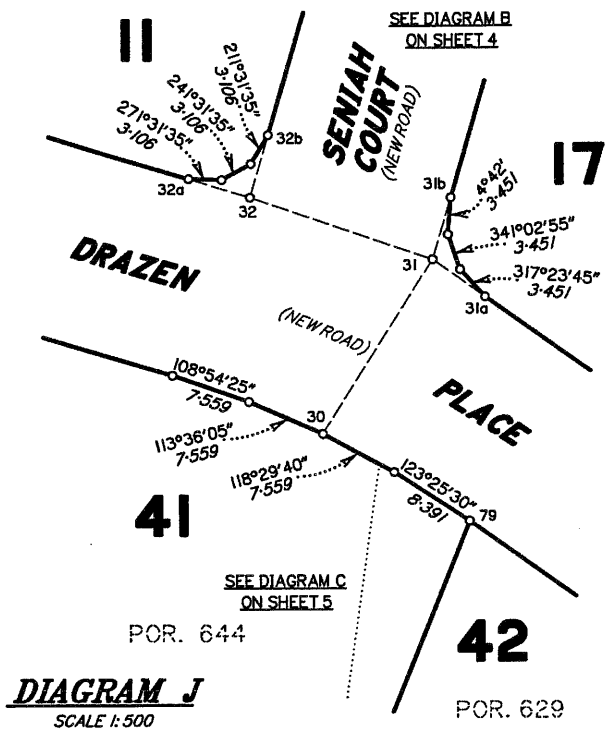
ADDITIONAL SHEET



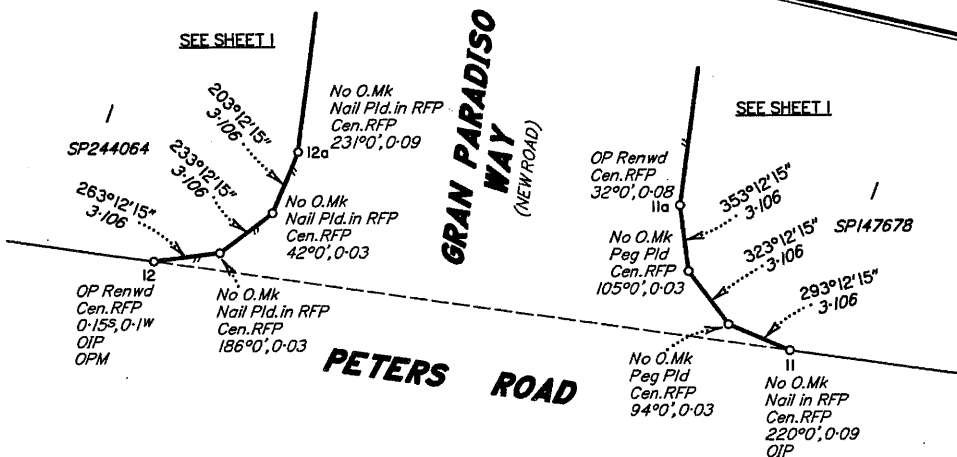
State copyright reserved.

Insert Plan Number **SP330180**

14628 DTD



**DIAGRAM N**  
SCALE 1:250



State copyright reserved.

Insert Plan Number **SP330180**



REFERENCE MARKS

STN	TO	ORIGIN	BEARING	DIST
1	OIP	2/SPI47678	328°13'20"	0.74
2	Screw in Kb		318°49'	6.359
3	Screw in Kb		244°24'	4.684
4	OIP	3/SPI47678	270°52'10"	1.05
4	Star Pkt (flush)		138°13'50"	24.166
6	Screw in Kb		144°06'	11.623
8	OIP	4/SPI47678	237°49'10"	1.5
9	OIP Leang, straightened (new Ref)	5/SPI47678	335°20'	0.77
10	OIP	6/SPI47678	203°00'15"	1.072
11	OIP	7/SPI47678	190°48'15"	0.497
11	Screw in Kb		275°48'	9.293
12	OIP	8/SPI47678	189°09'15"	0.555
12	Screw in Kb		89°23'40"	10.272
13	OIP	9/SPI47678	284°46'15"	1.038
13	St.Pkt.Fd flush		269°00'40"	5.044
14	Screw in Kb		275°29'55"	12.271
15	OIP Leang, straightened (new Ref)	14/SPI47678	44°33'15"	1.31
15	Screw in Kb		115°08'45"	6.003
16	OIP (destroyed in construction)	15/SPI47678	301°52'40"	0.895
16	Screw in Kb		284°41'55"	4.891
17	Screw in Kb		69°04'	3.14
18	Screw in Kb		191°40'	6.841
19	Screw in Kb		26°38'	4.619
20	Screw in Kb		187°40'	4.048
22	Screw in Kb		258°59'	7.997
23	Screw in Kb		143°23'	6.497
24	Screw in Kb		336°17'	7.252
28	Screw in Kb		223°52'	5.432
29	Screw in Kb		32°10'	5.892
30	Screw in Kb		3°53'	5.803
31	Screw in Kb		245°29'	5.017
32	Screw in Kb		154°12'	3.852
33	Screw in Kb		279°19'	7.216
34	Screw in Kb		106°49'	3.019
35	Screw in Kb		255°46'	5.748
36	Screw in Kb		3°42'	7.074
37	Screw in Kb		159°27'	6.533
38	Screw in Kb		177°34'	5.291
39	Screw in Kb		16°13'	5.911
41	Screw in Kb		191°40'	6.451
42	Screw in Kb		316°13'	5.823
43	Screw in Kb		273°0'	4.087
44	Screw in Kb		11°45'	5.216
45	Screw in Kb		264°39'	5.511
46	OIP	12/SPI47678	8°12'25"	1.08
46	Screw in Kb		96°38'	7.605
48	Screw in Kb		209°18'	5.386
49	Screw in Kb		17°51'	5.493
50	Screw in Kb		238°50'	6.652
51	OIP	13/SPI47678	17°14'15"	1.337
53	Screw in Kb		108°23'30"	5.457
54	Screw in Kb		251°58'35"	9.786
55	Screw in Kb		212°42'	10.505
56	Screw in Kb		28°35'	5.652
57	Screw in Kb		191°44'	5.424
58	Screw in Kb		30°0'	5.624
59	Screw in Kb		198°28'	5.297
60	Screw in Kb		26°18'	5.439
62	OIP	11/SPI47678	275°54'35"	1.02

TRAVERSES ETC

LINE	BEARING	DISTANCE
2-2a	188°13'55"	6.0
2-2b	98°32'40"	6.0
2a-3a	8°13'55"	30.0
3-3a	8°13'55"	6.0
3-3b	98°32'40"	6.0
11-12	278°12'15"	30.0
14-15	281°55'25"	18.038
16-16a	284°41'55"	4.891
16-17	310°39'45"	19.864
17-17a	280°07'10"	16.215
17-17b	195°38'30"	9.642
17-18	31°37'50"	19.348
18-18a	280°07'10"	6.0
18-18b	27°37'20"	6.0
19-19a	297°37'20"	6.0
19-19b	207°37'20"	6.0
19-20	27°37'20"	18.0
19-21	99°25'20"	18.948
20-20a	297°37'20"	12.0
20-20b	27°37'20"	12.0
22-23	287°56'50"	19.52
24-25	290°38'35"	18.409
28-29	231°40'05"	19.711
29a-29b	117°37'20"	3.4
30-31	32°24'55"	19.274
31-31a	125°34'10"	6.0
31-31b	16°31'35"	6.0
31-32	288°46'35"	18.014
32-32a	286°31'35"	6.0
32-32b	16°31'35"	6.0
33-34	284°21'55"	18.013
34-34a	321°21'30"	10.971
34-34b	196°31'35"	10.971
35-36	231°21'30"	18.0
38-39	183°35'50"	18.242
41-42	158°46'10"	18.006
43-43a	90°03'25"	6.0
43-43b	8°33'35"	6.0
44-43	8°33'35"	18.2
44-44a	90°03'25"	6.0
44-44b	188°33'35"	6.0
45-46	244°17'45"	21.78
47-48	57°38'50"	20.514
49-50	19°41'25"	18.015
53-54	51°38'	26.357
54-54a	251°58'35"	9.786
55-56	237°45'	27.55
57-58	194°12'40"	18.022
60-59	25°32'45"	18.022

LINE PEGS

STN	BEARING	DISTANCE
1-LP	8°13'55"	190.12
89a-LP	92°42'30"	94.71
89b-LP	87°45'05"	95.12
90a-LP	92°26'05"	72.95

MERIDIAN TABLE

LINE	PLAN BEARING	M. G. A. ZONE 56 BEARING
16a(Screw)-54a(Screw)	314°26'17"	314°26'17" vide CORS

PERMANENT MARKS

PM	ORIGIN	BEARING	DIST	NO	TYPE
3-PM		296°33'10"	8.5	209685	St.Pkt.in Conc.collar
10-OPM	6/SPI47678	260°44'	66.432	71222	Standard
12-OPM (New Ref.)	5/SP244064	112°06'	83.057	71222	Standard
12a-PM		89°04'	4.62	209686	St.Pkt.in Conc.collar
13-OPM (New Ref.)	1/SPI62808	258°31'07"	59.902	71231	Standard
17-PM		352°10'	3.143	209684	St.Pkt.in Conc.collar
21-PM		290°10'	4.982	209687	St.Pkt.in Conc.collar
32-PM		99°05'20"	3.996	209683	St.Pkt.in Conc.collar
43-PM		310°02'55"	5.263	209682	St.Pkt.in Conc.collar

M. G. A. COORDINATES GDA-2020

STATION	EASTING	NORTHING	ZONE	PU	LINEAGE	METHOD	REMARKS
16a	390 816.967	6 967 150.171	56	0.025	Derived	Auspos 2.4	Screw in Conc. Kerb
54a	390 516.267	6 967 445.030	56	0.025	Derived	Auspos 2.4	Screw in Conc. Kerb

